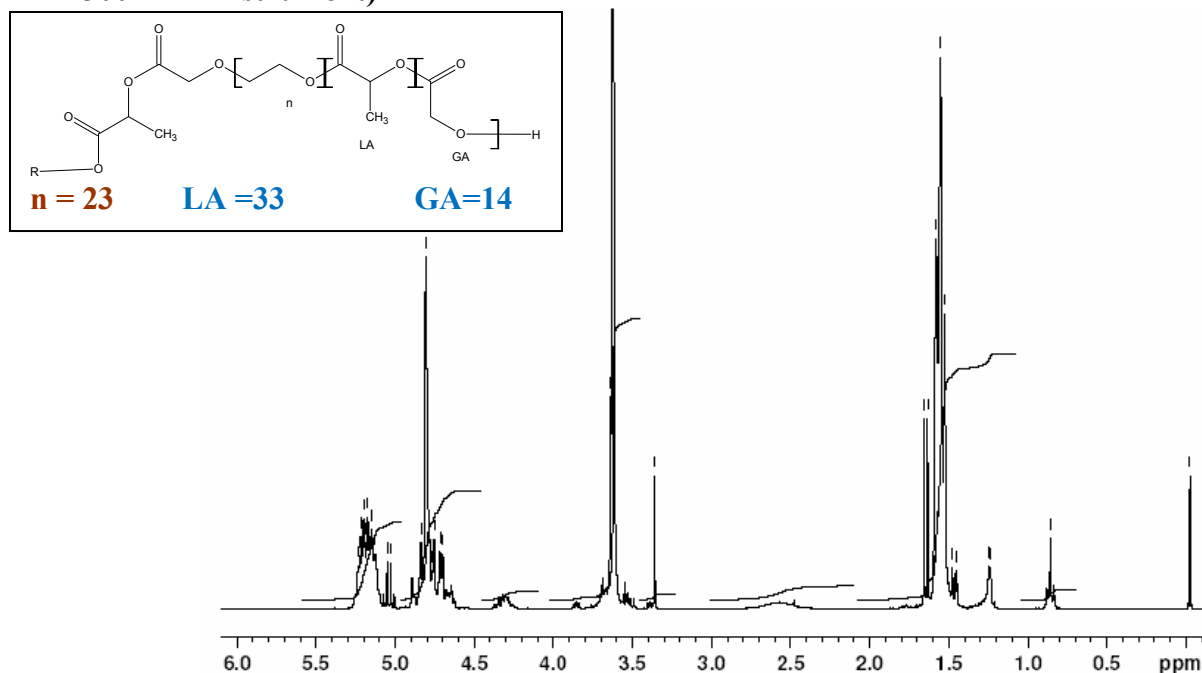


No. 11

Certificate of Analysis

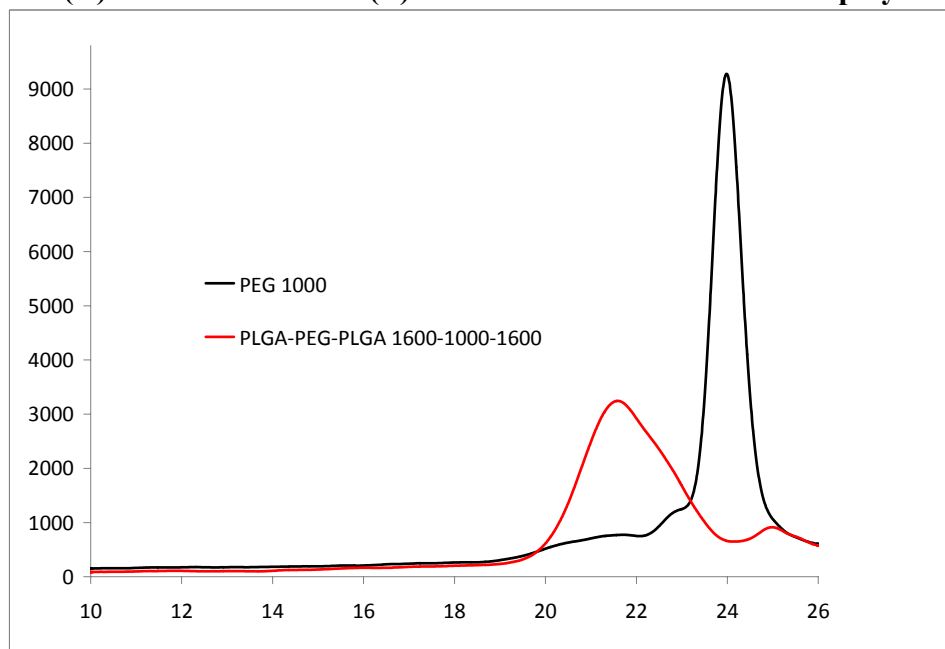
Product Name: Poly(lactic-co-glycolic acid)-*b*-Poly(ethylene glycol)-*b*-Poly(lactic-co-glycolic acid) copolymers

- ¹H-NMR Spectrum of P(D,L)LGA-PEG-P(D,L)LGA triblock copolymer in CDCl₃ (Varian Inova 300 MHz instrument)



M_n , NMR of PEG-PLA/PGA copolymers : 1000-2400/830

- GPC analysis of (A) PEG initiator and (B) PLGA-PEG-PLGA triblock copolymers



Analysis Method: Agilent 1100 system with 1 ml/min THF flow across three PLgel 5 um MIXED-D and -E columns (Agilent) and RI detector.

| Polymer | M_n (from GPC) | M_w (from GPC) | PDI |
|---------------------|------------------|------------------|------|
| PEG(1000) Initiator | 840 | 877 | 1.04 |
| AK11 | 2857 | 4349 | 1.52 |